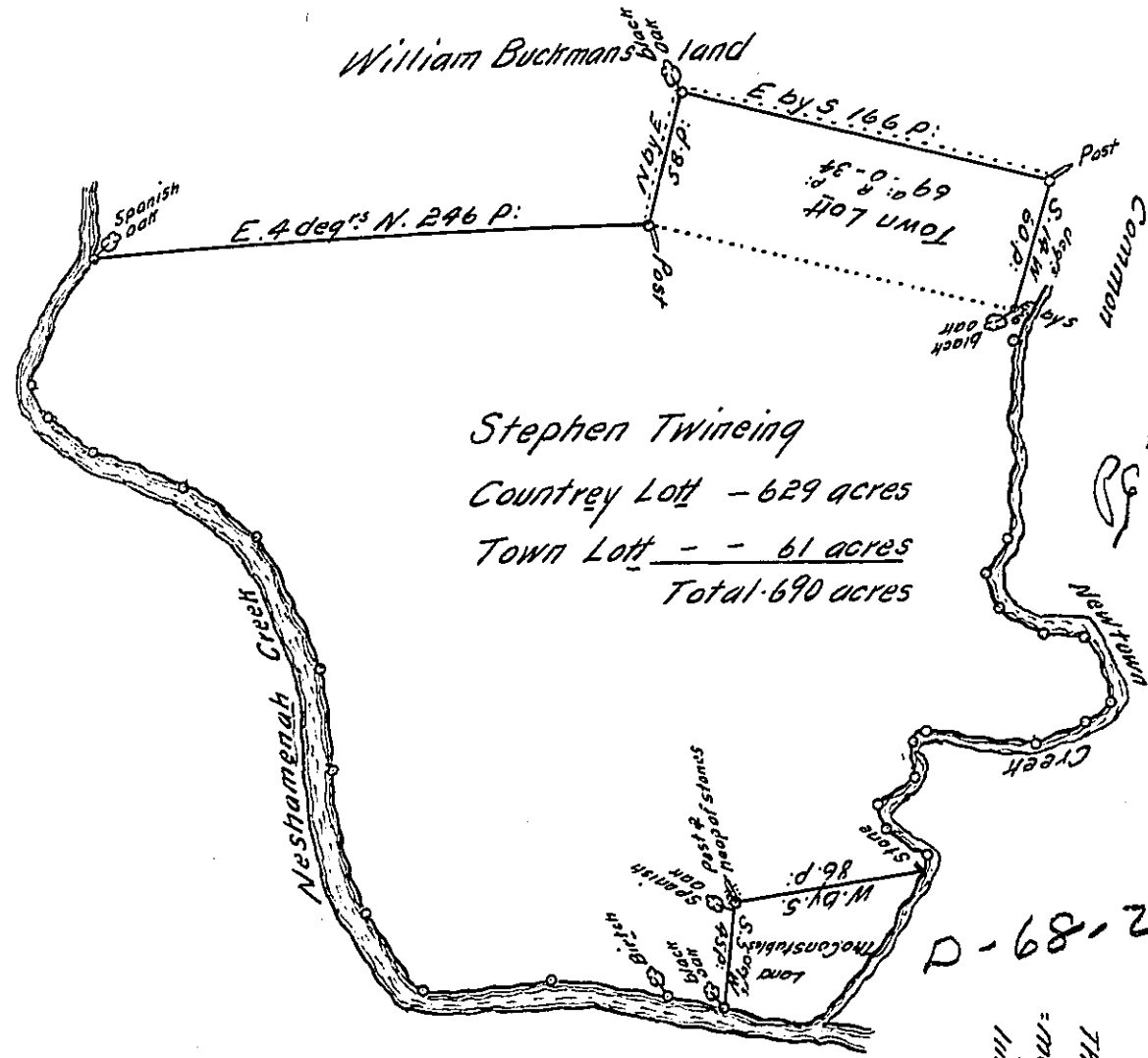


The Courses of Newtown
Creek from the house
downward



Stephen Twineing
Country Lott - 629 acres
Town Lott - 61 acres
Total 690 acres

Courses	Dist. in per.
S. 23. W	12
South	85
S. 34. W	20
S. 5. E	14
S. 59. E	22
S. 85. E	16
S. 25. E	29
S. 53. W	15
S. 74. W	20
N. 88. W	48
S. 30. W	8
S. 10. E	13
S. 52. W	22
S. 20. E	9
S. 57. E	22
S. 10. E	6

Courses	Dist. in per.
N. 30. E	60
N. 30. W	16
N. 54. W	26
N. 70. W	44
N. 55. W	40
N. 29. W	64
N. 9. W	44
N. 15. W	64
N. 39. W	40
N. 85. W	56
N. 74. W	76

The Courses of Neshamenah
Creek from Constables
line upward

By virtue of a General Warrant from the Proprietaries Comm^{rs} to me directed bearing date the fifth day of the eleventh month 1702. to Resurvey all such Tracts and parcels of Land within the County of Bucks as may be reasonably suspected to have been unduely Surveyed when first taken up and have not yet been rectified; Resurveyed unto Stephen Twineing a Tract of Land in Newtown in the said County, formerly laid out to Thomas Rowland. Beginning at a black oak by the house Thence E. by S. 6. per. to Newtown Creek, Thence down the several courses thereof to a stone in Thomas Constable's line, Then by the said Constable's Land West by South 86 p. to a Post and heap of stones by a Spanish Oak, Then S. 5 deg. W. 45. per. to a black oak by Neshamenah Creek, Then up the several courses of the said Neshamenah to a Spanish oak at William Buckman's Corner, Then by the said Buckman's Land E. 4 deg. N. 246 p. To a Post at the corner of the Town Lott, Then N. by E. 58 p. to a black oak by a Road, Then by the said Road E. by S. 166 perches to a Post by a fallen tree at the town Common, Then by the said Common S. 14 deg. N. 60 per. to the place of beginning. Containing six hundred and ninety Acres, Resurveyed the second day of the second month 1703. By me John Cutler

IN TESTIMONY that the above is a copy of the original remaining on file in the Department of Internal Affairs of Pennsylvania, made conformably to an Act of Assembly approved the 16th day of February, 1833, I have hereunto set my Hand and caused the Seal of said Department to be affixed at Harrisburg, this Fifth day of May 1909

Henry Howard
Secretary of Internal Affairs.